

# CLIP

COMMUNITY LED  
INCLUSION  
PARTNERSHIP

---



Community Led Inclusion Partnership

ANNUAL REPORT  
FOR 2022





# A LETTER FROM THE CHAIRS

---

## **MICHAEL SLIMINGS: INTERIM CHAIR**

CLIP (Community Led Inclusion Partnership) was created by representatives from a number of local organisations who recognised the impact that Covid-19 had on the lives of Disabled People in our community. We all recognised that the barriers Disabled People, Carers and those with Long Term Conditions faced on a daily basis had been highlighted even further by the circumstances we have all found ourselves in since March 2020.

As an informal group we recognised the following points; we would be stronger together, we needed the 'voices' of our communities to affect change and we needed to follow the ethos of the Social Model of Disability in everything we do.

## **HANNAH ROBERTSON - INTERIM SECRETERY**

"Within my role as Senior Dementia Advisor, and my volunteer role with Alzheimer's society I have always been passionate about people living with long term illnesses being able to access their community and live life to the full. I want to ensure that the right knowledge is being shared as well as the physical barriers being addressed in Hartlepool to make the town as inclusive as possible."

## **CHRISTINE FEWSTER - INTERIM TREASURER**

"I have two children with disabilities and passionate about creating positive change to ensure we build an accessible community at all levels. Becoming a member of CLIP is important and would encourage everyone to get involved, whether you are living with a long term condition or are a business/organisation, we all need to work together to make Hartlepool an inclusive town to live well"



# MEMBERS

---

## **OTHER STEERING GROUP MEMBERS INCLUDE:**

RACHEL AUSTIN - HARTLEPOOL DEAF CENTRE  
STEPHEN THOMAS - HARTLEPOOL HEALTHWATCH  
BARBARA MCLEOD - VISION SUPPORT HARTLEPOOL  
JULI SIMONS - HARTLEPOWER  
JULIETTE WARD - HARTLEPOOL BOROUGH COUNCIL  
JOANNE BLACKWOOD - THE BRIDGE HARTLEPOOL

CLIP WERE SUCCESSFUL IN RECEIVING A GRANT  
OF £48,800 FROM HARTLEPOOL BOROUGH  
COUNCIL TO HELP DRIVE FORWARD WORK WITHIN  
OUR COMMUNITY. THIS ALLOWED US TO EMPLOY  
OUR CLIP COORDINATOR - TRACIE BESTFORD

CLIP ARE KEEN TO HEAR FROM MEMBERS OF OUR  
COMMUNITY WHO WOULD LIKE TO VOLUNTEER A  
SMALL AMOUNT OF TIME TO CREATE POSITIVE  
CHANGE WITHIN OUR TOWN.

WE WILL HOLD OUR AGM IN JULY 2022 TO REVIEW OUR  
WORK AND ELECT FUTURE STEERING GROUP MEMBERS.



# OUR MISSION

---



HARTLEPOOL'S COMMUNITY LED INCLUSION PARTNERSHIP LAUNCHED IN MARCH 2021 TO PROMOTE ACCESS, INDEPENDENCE, AND CHOICE WITHIN OUR COMMUNITY. WE ARE A VOLUNTARY CONSTITUTED GROUP WHO ARE PASSIONATE ABOUT BREAKING DOWN BARRIERS AND SHARING GOOD PRACTICE ACROSS HARTLEPOOL.

WE BELIEVE THAT DISABILITY IS CREATED BY BARRIERS IN SOCIETY, THAT FALL INTO THREE CATEGORIES:

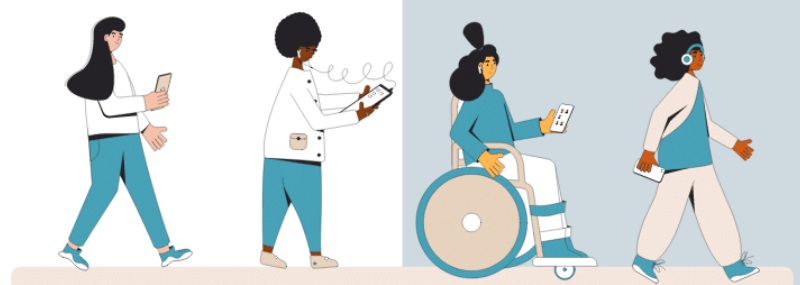
ENVIRONMENT, INCLUDING INACCESSIBLE, BUILDINGS AND SERVICES

ENVIRONMENT STEREOTYPING, DISCRIMINATION AND PREJUDICE

ORGANISATIONAL, INFLEXIBLE POLICIES, PRACTICES, AND PROCEDURES.

## OUR GOALS IN 2021 WERE TO:

- INCREASE ACCESS AND PARTICIPATION
- BRING ALL PEOPLE LIVING WITH A LONG-TERM CONDITION, DISABILITY, SENSORY LOSS AND/OR THEIR CARERS TOGETHER (VIRTUALLY AND FACE TO FACE)
- EMPLOY A DEDICATED 'CLIP CO-ORDINATOR' FOLLOWING A SUCCESSFUL APPLICATION TO HARTLEPOOL'S COMMUNITY POT.
- HOLD REGULAR SOCIAL OPPORTUNITIES TO REDUCE ISOLATION AND CONSULT WITH OUR COMMUNITY (VIRTUAL AND FACE TO FACE)
- WE BELIEVE PARTICIPATION AND CONSULTATION, CO-PRODUCTION, PEER SUPPORT, INFORMATION AND ADVICE ARE AT THE HEART OF CREATING CHANGE.



# HIGHLIGHTS

## 2021-2022

---

CLIP currently have 306 members.

Over the course of the last year we have met with our community members on a monthly basis.

During these sessions we have discussed various topics that our community felt were priority areas.

These include:

- **Access to TRANSPORT**
- **Access to EMPLOYMENT**
- **Access to FINANCE**
- **ACCESSIBILITY in our community**

We have also held multiple focus groups with our community on the following subject matters:

- **Hospital experiences from those living with a neurodiverse condition.**
- **Accessing local services with a Sensory Loss**
- **Disability & Poverty**
- **Inclusion within Education**
- **The Social Model Of Disability**
- **Accessing GP services**
- **Changing Places Facilities**

# CO-PRODUCTION & CONSULTATIONS 2021-2022

CLIP have been involved in various consultations and projects with service providers over the last 12 months.

These include:

- **Changing Places Facilities in Hartlepool - HBC**
- **Sensory Loss consultations - HBC**
- **APLE Collective addressing poverty within our disabled community - Speaking at the house of Lords**
- **SEND in schools - NTDi & HBC**
- **The Tall Ships Race Event (2023) - HBC**
- **Summerhill Cycle Track - HBC/Manilla Cycling**
- **The Highlight Development - HBC**
- **Hartlepool Train Station platform Upgrade - Network Rail**
- **Sported UK**
- **Autism Patients Attending Hospital Appointments**
- **VONNE - Inclusive Community Engagement**
- **Central Hub Sensory Loss Audit**
- **SPORTED Consultations**



We have also ran various surveys alongside our face to face focus groups to gather wider feedback from our members.

These include:

- **Accessibility**
- **Access To Transport**
- **Access To Employment**
- **Changing Places facilities in Hartlepool**
- **The Tall Ships Event 2023**
- **Autism Patients Experience Within Hospitals**
- **Poverty Linked To Disability**





# WORKING WITH OTHER AGENCIES TO PROMOTE CHANGE

---

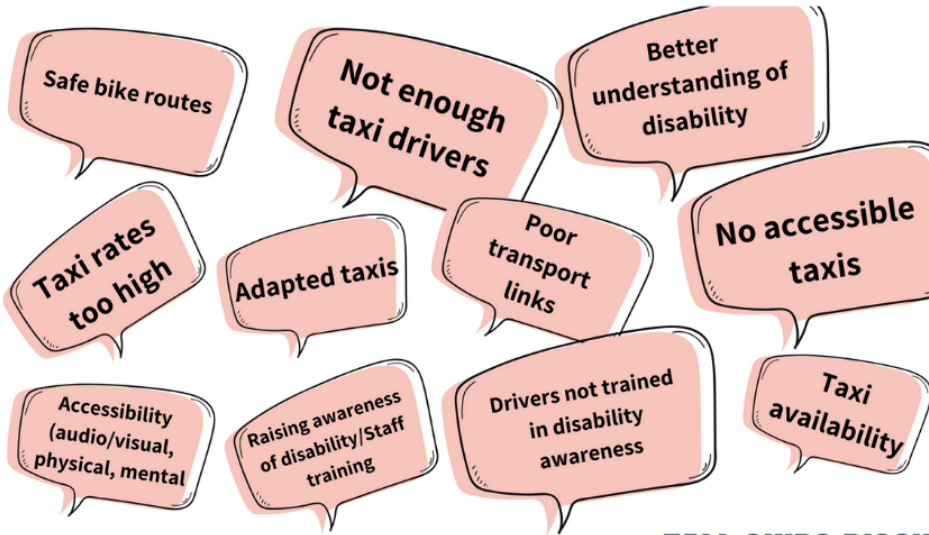
CLIP have been involved in a range of community events across Hartlepool over the last 12 months where we have been able to raise the groups profile, engage with the community and offer information and advice.

These include:

- CARERS WEEK 21/22
- DEMENTIA ACTION WEEK 22
- CATCOTE ACADEMY CAREERS EVENT
- MIDDLETON GRANGE SHOPPING CENTRE
- BIG CAREERS EVENT - HBC
- COMMUNITY HUB SOUTH OPEN EVENT
- CARERS RIGHTS DAY 21
- AUTISM AWARENESS WEEK
- PARENT CARER FORUM CONFERENCE 22
- MENTELL EVENT
- COMMUNITY HUB CENTRAL OPEN WEEK
- SAVE MONEY HARTLEPOOL 21
- HARTLEPOOL WATERFRONT FESTIVAL
- APPG ADDRESSING POVERTY



# KEY FINDINGS FROM OUR MEMBERS



## TALL SHIPS DISCUSSION GROUP





# MEMBER PARTICIPATION





# FINANCIAL OVERVIEW

---

17th May 2022 confirmed expenditure

Salary Costs - £11,864

Promotional Material - £1313.00

Stationary - £50.00

HR Costs - £162.00

Management fee - £2800.00

Refreshments - £125.00

Total Cost - £16,314

The total grant funding provided by HBC  
£48,800

Remaining balance available £32,486



# THE FUTURE

---



We are looking forward to working on all of our current projects, seeing them through to final stages and enjoying the end results.

We have a planned CLIP conference in October 2022 where we will host an event with various stall holders offering advice and information for our members. Guest speakers will attend updating our community on the various stages of the projects we are currently working on.

We are also looking forward to expanding our memberships through more frequent meetings, PR coverage of the work we are doing, alongside community engagements and events.





# CONTACT

**Tracie Bestford**

**CLIP**

**Co Ordinator**

**07457 401686**

**enquiries@clip.uk.com**

**www.clip.uk.com**



**HARTLEPOWER ENERGY HUB, 81 STRANTON, TS24 7QT**  
**FACEBOOK: WWW.FACEBOOK.COM/HARTLEPOOLCLIP**  
**TWITTER: @HARTLEPOOLCLIP**

## WE ARE ONE COMMUNITY



## A THOUSAND VOICES

**www.clip.uk.com**

